





NOTE READING WORKBOOK

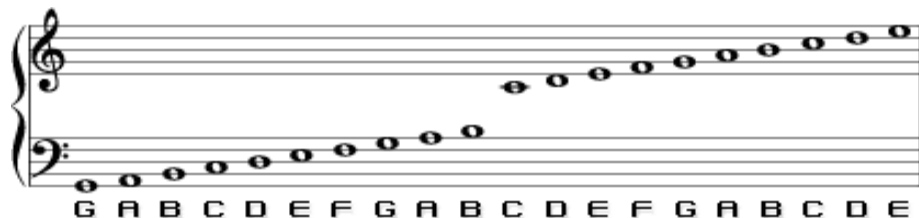
Treble and Bass Clefs



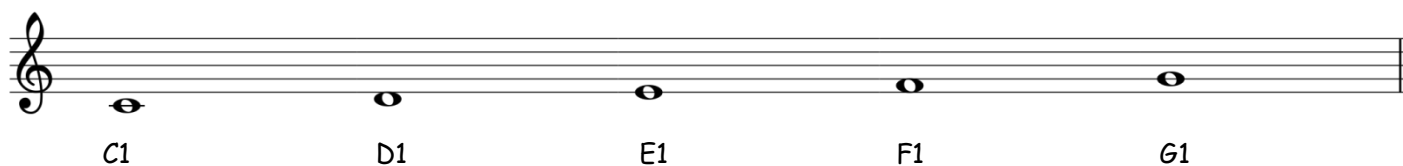
Written by Kathi Kerr
© Copyright 2011

Book 1
Levels 1, 2 & 3

Notes are written on 5 lines and 4 spaces, called a staff. There are 2 clefs: the treble clef  (played with the right hand on the piano), and the bass clef  (played with the left hand on the piano). The word treble means high pitches (so instruments that play high notes, such as a flute, read the treble clef), and bass means low (so low instruments, such as, obviously, the bass, read the bass clef). Below is called the "grand staff" which shows both the treble and bass clef and all the notes:



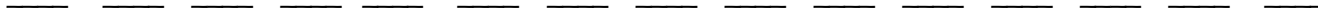
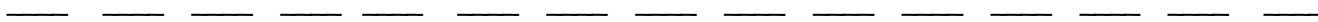
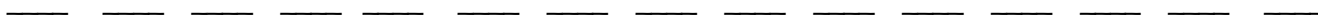
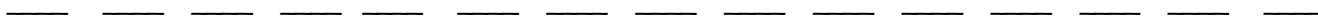
Starting with the treble clef Middle C, we're going to use the following notes:



Draw the following notes on the staves below:

Now play them!

Identify each note:



Now play them!